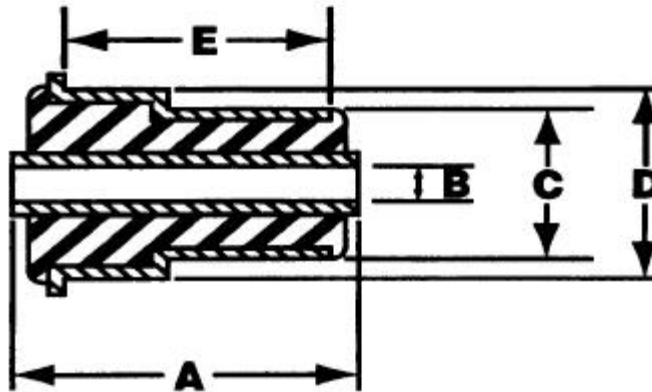




## DOMESTIC CONTROL ARM AND IDLER ARM RUBBER BUSHING CROSS-REFERENCE AND SIZE LISTING

Federal-Mogul Document #2184

REV10/99



RUBBER NUMBER	MOOG NUMBER	CLEVITE NUMBER	KIT NUMBER	AMOUNT IN KIT	SPECIFICATIONS (Inches unless noted)				
					A	B	C	D	E
61023	BR8	110480	K383*	1	1.750	0.625	1.406		2.500
61120	BR81	111930	K7010*	2	2.344	0.563	1.313		1.750
61128	BR15	111990	K317*	2	2.250	0.844	1.688		2.000
61157	BR83	112369	K5157*	1	2.969	0.500	1.500	1.531	2.625
61175	BR47	112620	K790*	1	1.672	0.688	1.156		1.641
61176	BR16	112631	K318*	2	2.250	0.938	1.875		2.000
			K3047*	1					
61192	BR27	112691	K5155	1	3.594	0.500	1.375		3.281
61195	BR48	112811	K791	1	1.875	0.813	1.469		1.813
61213	BR107	113211	K7043*	2	2.234	0.875	1.766		2.234
61254	BR151	113900	K8201*	-2	1.984	0.516	1.859		1.453
61264	BR147	114061	K7059	1	2.109	0.875	1.797		2.000
61310	BR212	235800	K5274	1	2.116	0.559	2.165		1.791
61313	BR234	235831	K3131	2	2.630	0.555	2.246	2.286	2.142
	BRG3	235836	K3164	4					
61332	BR233	236010	K3128	2	2.010	0.500	1.800	1.860	1.610
	BRG1	236012	K3162	4					
61337	BR9	104061	K8005*	1	2.313	0.625	1.141		2.000
61342	BR222	236072	K6285	-2	2.751	0.573	1.645	1.665	2.390
61362	BR210	226490	K8300	1	1.797	0.641	1.766		1.297
	BRG38	226491	K8621	2					
	BR211	236240	K8312	1	3.344	0.750	2.000		2.875
	BR262 (1)	239440	K8672	1	25.465	14.200	44.765		32.765
61379	BR237	236440	K5299	2	1.988	0.480	1.439	1.478	1.398
61414	BR218	236780	K6283	2	2.230	0.562	1.220	1.276	1.459
	BRG11	236781	K6418	4					
61416	BR223	236763	K8415	1	2.331	0.558	1.468	1.525	1.860
	BR252	236762	K8622	1	59.200	14.175	37.300	38.800	45.400
61435	BR227	236990	K6323	2	2.150	0.559	1.617	1.700	1.415
	BRG8	236993	K6415	4					
	BR250 (1)	238020	K6395	2	54.600	45.235	38.750	43.125	34.290
	BRG10 (1)	238021	K6417	4					
61461	BR261 (1)	236590	K8606	1	51.750	14.300	44.750		35.850
61469	BR244 (1)	237361	K6364	(2)	57.000	12.390	34.625	35.135	40.950
	BRG22 (1)	237362	K6425	(2)					
61480	BR231	240010	K6329	1	29.610	0.640	1.900	1.920	2.188
	BRG19	240012	K6424	(2)					

\* Obsolete Moog Kit Number

(1) Dimensions are in Millimeters

(2) Furnished as component part of kit only. Refer to Chassis Parts Catalog for proper usage.

RUBBER NUMBER	MOOG NUMBER	CLEVITE NUMBER	KIT NUMBER	AMOUNT IN KIT	SPECIFICATIONS (Inches unless noted)				
					A	B	C	D	E
61481	BR232	240020	K6329	1	38.866	0.640	1.900	1.920	3.212
	BRG20	240022	K6424	(2)					
61482	BR230	240040	K6327	1	3.020	0.640	2.135	2.207	2.550
	BRG18	240041	K6423	(2)					
61483	BR229	240030	K6327	(2)	3.551	0.640	2.135	2.207	3.126
	BRG17	240031	K6423	(2)					
61544	BR249 (1)	238990	K5307	1	54.000	12.175	32.500	35.640	41.950
61814	BR158	229401	K7070	2	1.906	0.734	1.422		1.375
62009	BR53	201160	K3032	(2)	1.563	0.688	1.250	1.313	1.000
62019	BR181	232590	K8211	1	3.375	0.500	1.438	1.500	2.750
62027	BR192	232910	K8275*	(2)	3.188	0.641	1.969	2.016	2.422
	BR246	239430	K8512	(2)	83.270	16.215	48.000	50.035	61.700
	BRG34 (1)	239431	K8617	(2)					
62028	BR191	232900	K8275*	(2)	3.031	0.641	1.859	1.891	2.250
62037	BR257 (1)	240930	K8637	(2)	61.000	12.250	53.000	54.000	48.000
62039	BR185	232180	K6178	2	2.406	0.848	1.859	1.922	2.000
62050	BR207	234710	K8297	(2)	3.281	0.563	1.641	1.687	2.359
	BRG35	234716	K8618	(2)					
	BR198	235040	K8279	(2)					
62051	BR196	233210	K8276*	(2)	2.016	0.688	1.391	1.406	1.500
	BRG31	233211	K8616	(2)					
62065	BR3	210071	K322*	4	2.219	0.875	1.438	1.484	2.000
62066	BR193	233462	K8277	(2)	3.031	0.625	1.813	1.844	2.234
62069	BR194	233470	K8277	(2)	3.019	0.625	1.922	1.969	2.375
62096	BR6	220510	K3045*	2	2.031	0.875	1.438	1.484	1.188
62099	BR7	220290	K3044*	2	1.563	0.688	1.250	1.313	1.000
62101	BR4	220660	K321	(2)	1.938	0.750	1.438	1.484	1.125
62106	BR197	233220	K8276*	(2)	1.906	0.688	1.313		1.234
	BRG32	233224	K8616	(2)					
62111	BR258 (1)	235150	K8637	(2)	61.000	12.250	45.500	46.000	48.100
62137	BR1	220050	K305*	4	1.500	0.672	1.250	1.266	1.234
62141	BR199	234700	K8297	(2)	3.219	0.563	1.891	1.922	2.375
	BRG36	234702	K8618	(2)					
62143	BR189	233971	K5259	2	2.984	0.500	1.859	1.922	2.313
62144	BR25	220130	K377	1	1.500	0.625	1.141	1.219	1.125
62145	BR26	220190	K379*	1	2.313	0.625	1.141	1.219	1.938
62151	BR2	220210	K304	4	1.891	0.734	1.266	1.328	1.563
62161	BR205	234130	K8292	1	1.791	0.562	1.781	1.812	1.406
	BRG37	234132	K8620	2					
62165	BR206	235800	K5267	1	2.297	0.484	2.172		1.813
62181	BR30	220741	K8039*	2	1.875	0.750	1.438	1.484	1.125
62195	BR240	234980	K8473*	2	1.177	0.475	1.035	1.047	0.768
62208	BR45	220920	K788*	1	2.250	0.500	1.125	1.188	1.875
62214	BR187	233350	K7099	1	2.406	0.563	1.266	1.297	1.531
62225	BR195	234681	K5265	2	2.109	0.406	1.641	1.672	
	BR217	235952	K6271	2	2.136	0.486	1.645	1.665	1.604
	BR243 (1)	237372	K6364	(2)	54.000	12.390	41.845	42.360	41.000
	BRG21 (1)	237373	K6425	(2)					
62232	BR241	234390	K8476*	1	2.343	0.474	1.644	1.703	1.880
62240	BR82	221279	K5156*	1	3.000	0.500	2.313	2.344	2.359
62244	BR202	234880	K5187	2	1.875	0.828	1.438	1.469	1.333
62270	BR18	221580	K325	4	1.875	0.500	1.344	1.375	1.328

\* Obsolete Moog Kit Number

(1) Dimensions are in Millimeters

(2) Furnished as component part of kit only. Refer to Chassis Parts Catalog for proper usage.

RUBBER NUMBER	MOOG NUMBER	CLEVITE NUMBER	KIT NUMBER	AMOUNT IN KIT	SPECIFICATIONS (Inches unless noted)				
					A	B	C	D	E
62271	BR216	235250	K6253	(2)	2.410	0.488	1.900		2.010
62274	BR219	235200	K6282	(2)	2.992	0.559	1.437	1.457	2.618
	BRG14	235201	K6420 K7194	(2)					
62282	BR110	224621	K8135	2	2.406	0.578	1.859	1.922	2.000
62283	BR61	221730	K6030*	1	2.516	0.625	1.359	1.422	1.969
62283	BR100	225132	K6076	(2)	2.406	0.516	1.359	1.422	1.969
62283	BR75	225190	K5149	(2)	2.406	0.516	1.359	1.422	2.000
62284	BR60	224740	K6031*	1	2.500	0.625	1.609	1.672	1.969
62287	BR236	237910	K5296	1	2.718	0.631	2.303	2.323	2.220
62293	BR40	221860	K8034*	(2)	2.078	0.500	1.125		1.844
62294	BR226	235610	K6288	1	2.948	0.590	1.885	1.916	2.421
62304	BR31	221970	K408	4	1.875	0.500	1.172		1.328
62306	BR21	221990	K8068	(2)	2.000	0.625	1.422	1.438	1.313
62328	BR203	234240	K8512	(2)	3.047	0.641	1.859	1.891	2.250
			K8289	(2)					
	BRG33	234234	K8617	(2)					
62329	BR85	222249	K5159*	2	2.594	0.500	1.703	1.719	1.859
62331	BR44	222250	K8040*	(2)	2.000	0.875	1.422	1.438	1.313
62332	BR38	222280	K5152*	1	2.875	0.750	1.563	1.578	2.328
62334	BR19	222600	K5147*	(2)	2.406	0.578	1.359	1.422	2.000
62342	BR22	221710	K426	2	1.719	0.813	1.500	1.516	1.910
62343	BR56	222379	K5102*	1	3.500	0.516	1.281	1.344	2.766
62345	BR34	222399	K418*	1	3.719	0.750	1.453	1.500	2.875
62348	BR49	222410	K8044*	1	2.859	0.500	1.156	1.188	2.109
62351	BR35	201190	K419*	2	2.219	0.844	1.438	1.500	1.313
62362	BR32	222500	K413*	(2)	1.750	0.753	1.438		1.125
62363	BR33	222560	K413*	(2)	1.938	0.753	1.438	1.125	
62366	BR23	222580	K8069*	1	2.313	0.641	1.281	1.313	1.781
62367	BR24	222590	K8042	(2)	1.750	0.641	1.281		1.359
62380	BR106	225890	K3019*	1	20.470	0.563	1.141	1.188	1.422
	BR117	222700	K3078*	1	1.797	0.563	1.141	1.188	1.422
62381	BR39	222740	K8096*	1	2.828	0.516	1.297	1.344	1.672
62404	BR58	201122	K3036*	2	1.984	0.500	1.250	1.313	1.000
	BR57	201150	K3037*	2	1.781	0.625	1.250	1.313	1.000
62410	BR62	223011	K8066*	1	2.313	0.766	1.438	1.469	1.797
62411	BR94	223029	K5179*	1	2.391	0.563	1.859	2.109	1.469
62415 or 62416	BR43	223080	K8036	(2)	2.750	0.750	1.922	2.078	2.078
62418	BR52	223100	K5162	2	0.797	0.688	1.297		1.188
62446	BR130	223408	K6333	(2)	2.391	0.578	1.891	1.922	2.000
			K6109						
	BRG12	223409	K6419	(2)					
	BR68	223400	K5144	1	2.406	0.516	1.906	1.922	2.000
	BR190	234011	K5262	2	2.391	0.578	1.891	1.922	2.000
BR221	236640	K6285	(2)	2.590	0.657	1.895	1.915	2.070	
62447	BR69	223390	K5144	1	2.406	0.516	1.656	1.672	1.969
62460	BR122	223580	K5195*	2	2.781	0.500	1.859	1.891	2.250
62470	BR99	223690	K8110*	1	2.813	0.891	1.625		2.203
62471	BR91	223642	K3059	1	2.000	0.563	1.313	1.344	1.422
62480	BR80	223781	K3095	1	1.797	0.625	1.500		1.266

\* Obsolete Moog Kit Number

(1) Dimensions are in Millimeters

(2) Furnished as component part of kit only. Refer to Chassis Parts Catalog for proper usage.

RUBBER NUMBER	MOOG NUMBER	CLEVITE NUMBER	KIT NUMBER	AMOUNT IN KIT	SPECIFICATIONS (Inches unless noted)				
					A	B	C	D	E
62488	BR64	223904	K8082	1	3.375	0.500	1.313		2.750
62496	BR86	224000	K5160*	2	2.969	0.500	1.859	1.922	2.391
62506	BR70	224220	K6063*	2	1.531	0.688	1.391	1.500	1.156
62508	BR51	224240	K6022	(2)	1.844	0.625	1.266	1.359	1.375
62509	BR50	224250	K6022	(2)	2.344	0.625	1.266	1.359	1.875
62511	BR72	224270	K6060*	1	1.984	0.516	1.141	1.156	1.469
	BR77	225320	K6062	2	1.984	0.563	1.203	1.219	1.469
62512	BR36	224289	K6021	(2)	1.328	0.500	1.078	1.094	0.859
62519	BR90	224361	K8103	1	1.750	0.563	1.281		1.359
62523	BR95	224444	K6075	1	2.609	0.625	2.188	2.203	2.016
62524	BR71	224450	K6055	1	2.781	0.828	1.688	1.781	2.359
	BR247	230180	K6134	1	2.970	0.761	1.560	1.680	2.350
62526	BR73	223811	K5147*	(2)	2.406	0.563	1.969	2.031	2.000
	BR74	224480	K5149	(2)			1.375	1.422	
62536	BR123	224230	K6068	1	2.156	0.500	1.609	1.672	1.469
62545	BR66	224710	K8083	2	1.516	0.750	1.406	1.453	0.938
	BR162	230573	K8219	2	1.516	0.625	1.406	1.453	0.938
	BRG30	230575	K8615	4					
62546	BR109	224731	K8134*	2	2.406	0.578	2.188	2.203	1.844
62559	BR164	227001	K7077	1	3.344	0.625	1.375	1.406	2.844
	BRG27	227002	K7193	2					
62568	BR118	225091	K7044*	2	1.906	0.719	1.391	1.422	1.469
62574	BR65	225111	K7006	2	2.234	0.500	1.297	1.328	1.469
	BRG23	225115	K7189	4					
	BR188	233340	K5260	2	2.234	0.500	1.297	1.328	1.469
62578	BR98	225220	K8109*	1	2.125	0.578	1.203		1.672
62581	BR103	225300	K8132	2	2.078	0.500	1.422	1.453	1.813
62585	BR101	225342	K6076	(2)	2.406	0.516	1.656	1.672	1.984
	BR184	232320	K6177	(2)	2.406	0.484	1.656	1.672	2.031
	BRG13	232321	K6420 K6421 K7194	(2)					
62587	BR142	225371	K8177	1	1.813	0.766	1.735		1.266
	BR143	227510	K8179	1	1.813	0.641	1.719		1.266
62609	BR59	225712	K6029*	1	2.484	0.844	0.938		1.063
62619	BR144	225872	K5222	2	2.813	0.516	1.891	1.922	2.156
62624	BR112	225960	K8137*	1	2.125	0.594	1.250		1.672
62627	BR120	225970	K8140A*	2	1.984	0.578	1.375	1.438	1.766
62632	BR159	114231	K7071	1	2.531	0.906	1.859		2.500
62638	BR111	226108	K8136	2	2.406	0.578	2.438	2.469	1.844
62659	BR124	226440	K5196	2	1.578	0.672	1.281		1.219
62666	BR121	226511	K3080*	2	1.984	0.500	1.250	1.302	1.313
	BR141	227279	Part of 401790 Package only (K3088)		1.984	0.500	1.250		1.219
	BR165	231430	K8278	2	1.781	0.594	1.313		1.313
62694	BR127	226970	K5206	1	3.141	0.578	1.422		2.641
62695	BR126	226990	K6103*	1	2.609	0.625	1.609	1.672	1.969
62713	BR150	230061	K8202	2	1.828	0.750	1.406		1.188
62716	BR132	227820	K6116	2	2.609	0.578	2.188	2.203	2.156
62718	BR235	237900	K5296	1	2.570	0.640	2.185	2.205	2.030
62723	BR136	227500	K6114*	2	2.297	0.453	1.422	1.453	1.922
62727	BR139	227980	K8171*	1	2.984	0.500	1.250	1.375	2.344

\* Obsolete Moog Kit Number

(1) Dimensions are in Millimeters

(2) Furnished as component part of kit only. Refer to Chassis Parts Catalog for proper usage.

RUBBER NUMBER	MOOG NUMBER	CLEVITE NUMBER	KIT NUMBER	AMOUNT IN KIT	SPECIFICATIONS (Inches unless noted)				
					A	B	C	D	E
62735	BR138	227970	K8169	2	1.500	0.625	1.266	1.313	0.969
62739	BR87	228810	K5161	2	2.406	0.516	1.859	1.922	2.000
62741	BR113	225690	K5189	2	1.750	0.688	1.313		1.234
	BR128	228020	K6108	2	1.750	0.688	1.297	1.313	1.234
	BR157	230051	K6144	(2)	1.828	0.688	1.297	1.313	1.500
	BR204	234750	K6206	(2)	1.875	0.688	1.375	1.406	1.203
62742	BR129	228056	K3113	1	2.406	0.578	1.688		2.031
	BRG4	228057	K3165 K6419	2 (2)					
	BR253	228058	K6333	(2)	2.403	0.577	1.6475	1.6675	2.030
62743	BR131	228080	K6110	(2)	2.406	0.516	1.359	1.422	2.031
62749	BR133	228230	K6111	(2)	2.594	0.516	1.859	1.922	2.000
62754	BR135	228342	K6113	2	2.516	0.688	1.859	1.922	2.031
60755	BR134	228360	K6112	2	1.703	0.516	1.359	1.422	1.203
62756	BR137	228330	K6115*	(2)	2.828	0.516	1.859	1.922	2.000
62787	BR146	228961	K7058	2	1.781	0.688	1.422		1.188
62792	BR152	229072	K8201*	(2)	2.406	0.578	2.188		1.641
62793	BR153	229232	K8205*	2	2.406	0.766	2.188	2.203	1.906
62798	BR167	230751	K8237	1	2.016	0.500	1.563		1.813
62800	BR148	229020	K6138	2	1.938	0.750	1.609	1.688	1.406
	BRG7	229022	K6413	4					
62804	BR149	229011	K6137	2	2.453	1.000	2.125	2.203	2.125
	BRG16	229012	K6422	4					
62810	BR154	230520	K7065 K6144	1	3.344	0.750	1.641	1.703	2.844
	BRG26	230521	K7192	2					
62880	BR156	230474	K6198	2	2.016	0.688	1.375	1.406	1.484
	BRG5	230478	K6409	4					
62892	BR169	230610	K3100*	(2)	3.250	0.609	1.609	1.672	2.797
62896	BR178	230600	K6166	1	1.750	0.516	2.000		1.250
62903	BR166	230740	K8240	2	1.828	0.750	1.500	1.547	1.188
62907	BR170	230700	K3100*	(2)	2.719	0.609	1.859	1.222	2.250
62910	BR168	230620	K3098	2	1.516	0.641	1.422	1.453	0.938
62925	BR186	230931	K7079	1	2.531	0.500	1.328	1.344	1.765
	BRG28	230932	K7195	2					
62938	BR183	231170	K6177	(2)	3.000	0.484	1.438	1.453	2.625
	BRG15	231174	K6421	(2)					
62955	BR171	231500	Part of 402140 Package only (K3096)		1.984	0.500	1.250	1.297	1.453
	BRG2	231501	Part of 402142 Package only (K3163) (2)						
62960	BR180	231561	K6170	2	1.594	0.484	1.156	1.188	1.125
62961	BR179	231571	K6163	(2)	2.344	0.484	1.578	1.609	1.813
62973	BR209	236320	K7117	1	3.328	0.750	2.000	2.063	2.875
	BRG29	236321	K7196	2					
62974	BR208	236330	K7118	2	1.891	0.750	1.656	1.703	1.281
	BRG25	236331	K7191	4					
62982	BR176	233990	K7084	2	1.781	0.625	1.313	1.328	1.188
	BRG24	233993	K7190	4					
62995	BR182	232310	K6176	2	1.828	0.688	1.469	1.531	1.469
	BRG6	232312	K6411	4					
63274	BR67	312181	K7007	1	2.297	0.844	1.734		2.297
63509	BR224	363300	K8416	1	1.996	0.396	1.300	1.496	-

\* Obsolete Moog Kit Number

(1) Dimensions are in Millimeters

(2) Furnished as component part of kit only. Refer to Chassis Parts Catalog for proper usage.

RUBBER NUMBER	MOOG NUMBER	CLEVITE NUMBER	KIT NUMBER	AMOUNT IN KIT	SPECIFICATIONS (Inches unless noted)				
					A	B	C	D	E
63570	BR242 (1)	363560	K6351	(2)	59.650	12.175	49.200	54.000	-
63574	BR239	363592	K5298	1	2.740	0.555	1.673		-
63585	BR225	363693	K8417 K6331	1	1.996	0.474	1.299	1.504	-
63598	BR251	313320	K3147	1	1.597	0.401	1.527		1.388
63607	BR220	363421	K6284	2	2.343	0.474	1.543	1.654	-
80172	BR46	821260	K3026	1	2.313	0.719	1.156		2.078
	BR214	822460	K9299	1	2.334	0.716	1.143		2.006
80189	BR79	821274	K8094	1	2.313	0.641	1.156		2.078
80198	BR119	821300	K8139*	2	1.750	0.641	1.156		1.516
80234	BR63	821370	K8067*	1	2.813	0.891	1.438		2.578
80290	BR96	821530	Part of 401370 Package only (K7017*)		2.313	0.641	1.141		2.000
80366	BR108	821460	K956*	1	1.172	0.688	1.672	2.078	1.672
80498	BR104	821640	Part of 401830 Package only (K7045*)		2.172	0.625	1.250		1.781
	BR140	821821	Part of 401820 Package only (K7049)		2.188	0.625	1.313	1.328	1.938
80542	BR125	821780	Part of 401880 Package only (K7046)		2.313	0.641	1.172		2.078
80816	BR177	831760	K6163	1	2.344	0.484	1.578		1.859
81129	BR238	832940	K5300	2	1.835	0.474	1.263	1.322	1.418
81245	BR228	833130	K6325	2	2.150	0.559	1.617	1.633	1.415
	BRG9	833131	K6416	4					
81486	BR248 (1)	833440	K8495	(2)	81.200	25.900	57.800	62.090	60.900
81957	BR255 (1)	834770	K8658	(2)	75.600	16.175	49.350	50.350	54.900
82146	BR88	821570	K5171*	1	1.172	0.688	1.688	2.078	1.656
85126	BR256 (1)	834760	K8658	(2)	81.200	16.175	55.350	56.350	63.000
85320	BR260 (1)	853200	K7212	1	59.200	14.175	38.810		45.350
Special	BR175	808850	K6155	1	1.688	0.500	1.359	1.422	1.188
Special	BR200	809610	K7103	(2)	1.703	0.578	1.172		1.328
Special	BR201	809640	K7104	(2)	1.984	0.594	1.297	1.328	1.469
Special	BR215	813190	K6250	2	1.594	0.474	1.151	1.191	1.132

### CLEVITE ASSEMBLY NUMBER NUMERICAL LISTING

CLEVITE NUMBER	MOOG NUMBER	KIT NUMBER	CLEVITE NUMBER	MOOG NUMBER	KIT NUMBER
104061	BR9	K8005*	201160	BR53	K3032
110480	BR8	K383*	201190	BR35	K419*
111930	BR81	K7010*	210071	BR35	K322*
111990	BR15	K317*	220050	BR1	K305*
112369	BR83	K5157*	220130	BR25	K377
112620	BR47	K790*	220190	BR26	K379*
112631	BR16	K3047*	220210	BR2	K3047*
112691	BR27	K5155	220290	BR7	K3044*
112811	BR48	K791	220510	BR6	K3045*
113211	BR107	K7043*	220660	BR4	K321
113900	BR151	K8201*	220741	BR30	K8039*
114061	BR147	K7059	220920	BR45	K788*
114231	BR159	K7071	221279	BR82	K5156*
201122	BR58	K3036*	221580	BR18	K325
201150	BR57	K3037*	221710	BR22	K426

\* Obsolete Moog Kit Number

(1) Dimensions are in Millimeters

(2) Furnished as component part of kit only. Refer to Chassis Parts Catalog for proper usage.

CLEVITE NUMBER	MOOG NUMBER	KIT NUMBER
221730	BR61	K6030*
221860	BR40	K8034*
221970	BR31	K408
221990	BR21	K8068
222249	BR85	K5159*
222250	BR44	K8040*
222280	BR38	K5152*
222379	BR56	K5102*
222399	BR34	K418*
222410	BR49	K8044*
222500	BR32	K413*
222560	BR33	K413*
222580	BR23	K8069*
222590	BR24	K8042
222600	BR19	K5147*
222700	BR117	K3078*
222740	BR39	K8096*
223011	BR62	K8066*
223029	BR94	K5179*
223080	BR43	K8046
223100	BR52	K5126
223390	BR69	K5144
223400	BR68	K5144
223408	BR130	K6109
223409	BRG12	K6419
223580	BR122	K5195*
223642	BR91	K3059
223690	BR99	K8110*
223781	BR80	K8095
223811	BR73	K5147*
223904	BR64	K8082
224000	BR86	K5160*
224220	BR70	K6063*
224230	BR123	K6068
224240	BR51	K6022
224250	BR50	K6022
224270	BR72	K6060*
224289	BR36	K6021
224361	BR90	K8103
224444	BR95	K6075
224450	BR71	K6055
224480	BR74	K5149
224621	BR110	K8135
224710	BR66	K8083
224731	BR109	K8134*
224740	BR60	K6031*
225091	BR118	K7044*
225111	BR65	K7006
225115	BRG23	K7189
225132	BR100	K6076
225190	BR75	K5149
225220	BR98	K8109*

CLEVITE NUMBER	MOOG NUMBER	KIT NUMBER
225300	BR103	K8132
225320	BR77	K6062
225342	BR101	K6076
225371	BR142	K8177
225712	BR59	K6029*
225872	BR144	K5222
225890	BR106	K3019*
225960	BR112	K8137*
225970	BR120	K8140A*
226108	BR111	K8136
226440	BR124	K5196
226491	BRG38	K8621
226511	BR121	K3080*
226590	BR113	K5189
226970	BR127	K5026
226990	BR126	K6103*
227001	BR164	K7077
227002	BRG27	K7193
227279	BR141	K3088
227500	BR136	K6114*
227510	BR143	K8179
227820	BR132	K6116
227970	BR138	K8169
227980	BR139	K8171*
228020	BR128	K6108
228056	BR129	K3113
228057	BRG4	K6419
228080	BR131	K6110
228230	BR133	K6111
228330	BR137	K6115*
228342	BR135	K6113
228360	BR134	K6112
228810	BR87	K5161
228961	BR146	K7058
229011	BR149	K6137
229012	BRG16	K6422
229020	BR148	K6138
229022	BRG7	K6413
229072	BR152	K8201*
229232	BR153	K8205*
229401	BR158	K7070
230051	BR157	K6144
230061	BR150	K8202
230180	BR247	K6134
230474	BR156	K6198
230478	BRG5	K6409
230520	BR154	K7065
230521	BRG26	K7192
230573	BR162	K8219
230575	BRG30	K8615
230600	BR178	K6166
230610	BR169	K3100*

\* Obsolete Moog Kit Number

(1) Dimensions are in Millimeters

(2) Furnished as component part of kit only. Refer to Chassis Parts Catalog for proper usage.

CLEVITE NUMBER	MOOG NUMBER	KIT NUMBER
230620	BR168	K3098
230700	BR170	K3100*
230740	BR166	K8240
230751	BR167	K8237
230931	BR186	K7097
230932	BRG28	K7195
231170	BR183	K6177
231430	BR165	K8278
231500	BR171	K3096
231501	BRG2	K3163
231560	BR180	K6170
231570	BR179	K6163
231174	BRG15	K6421
232180	BR185	K6178
232310	BR182	K6176
232312	BRG6	K6411
232320	BR184	K6177
232321	BRG13	K6421
232590	BR181	K8211
232900	BR191	K8275*
232910	BR192	K8275*
233210	BR196	K8276*
233211	BRG31	K8616
233220	BR197	K8276*
233224	BRG32	K8616
233340	BR188	K5260
233350	BR187	K7099
233462	BR193	K8277
233470	BR194	K8277
233971	BR189	K5259
233990	BR176	K7084
233993	BRG24	K7190
234011	BR190	K5262
234130	BR205	K8292
234132	BRG37	K8620
234240	BR203	K8289
234243	BRG33	K8617
234390	BR241	K8476*
234680	BR195	K5265
234700	BR199	K8297
234702	BRG36	K8618
234712	BR207	K8297
234716	BRG35	K8618
234750	BR204	K6206
234880	BR202	K5187
234980	BR240	K8473*
235040	BR198	K8279
235200	BR219	K6282
235201	BRG14	K7194
235250	BR216	K6253
235610	BR226	K6288
235800	BR206	K5267

CLEVITE NUMBER	MOOG NUMBER	KIT NUMBER
235800	BR212	K5274
235830	BR234	K3131
235836	BRG3	K3164
236010	BR233	K3128
236012	BRG1	K3162
236070	BR222	K6285
236240	BR211	K8312
236250	BR210	K8300
236320	BR209	K7117
236321	BRG29	K7196
236330	BR208	K7118
236331	BRG25	K7191
236440	BR237	K5299
236640	BR221	K6285
236760	BR223	K8415
236780	BR218	K6283
236781	BRG11	K6418
236990	BR227	K6323
236993	BRG8	K6415
237361	BR244	K6364
237362	BRG22	K6425
237372	BR243	K6364
237373	BRG21	K6425
237450	BR231	K6329
237460	BR232	K6329
237470	BR229	K6327
237480	BR230	K6327
237900	BR235	K5296
237910	BR236	K5296
238020	BR250	K6395
238021	BRG10	K6417
238990	BR249	K5307
239430	BR246	K8512
239431	BRG34	K8617
240012	BRG19	K6424
240022	BRG20	K6424
240031	BRG17	K6423
240041	BRG18	K6423
312181	BR67	K7007
313320	BR251	K3147
363300	BR224	K8416
363420	BR220	K6284
363560	BR242	K6351
363592	BR239	K5298
363691	BR225	K8417
622250	BR217	K6271
808850	BR175	K6155
809610	BR200	K7103
809640	BR201	K7104
813190	BR215	K6250
821260	BR46	K3026
812274	BR79	K8094

\* Obsolete Moog Kit Number

(1) Dimensions are in Millimeters

(2) Furnished as component part of kit only. Refer to Chassis Parts Catalog for proper usage.



CLEVITE NUMBER	MOOG NUMBER	KIT NUMBER
821300	BR119	K8139*
821370	BR63	K80678
821460	BR108	K956*
821530	BR96	K7017
821570	BR88	K5171*
821640	BR104	K7045
821780	BR125	K7046

CLEVITE NUMBER	MOOG NUMBER	KIT NUMBER
821820	BR140	K7049
822460	BR214	K9299
831760	BR177	K6163
832940	BR238	K5300
833130	BR228	K6325
833131	BRG9	K6416
833440	BR248	K8495

\* Obsolete Moog Kit Number

(1) Dimensions are in Millimeters

(2) Furnished as component part of kit only. Refer to Chassis Parts Catalog for proper usage.



## DOMESTIC CONTROL ARM AND IDLER ARM RUBBER BUSHING CROSS-REFERENCE - O.E. TO MOOG

Federal-Mogul Document #2185

AMERICAN MOTORS	
MFG. NO.	MOOG NO.
2175920	BR58
3109011	BR91
3133508	BR54
3149622	BR58
3153573	BR9
3154730	BR53
3154731	BR57
3163094	BR46
3166214	BR117
3169723	BR91
3175920	BR58
3182630	BR87
3185826	BR87

AMERICAN MOTORS	
MFG. NO.	MOOG NO.
3185827	BR87
3185828	BR87
3185829	BR87
3186437	BR106
3190911	BR91
3194353	BR121
3197586	BR141
3215310	BR146
3216484	BR87
3218849	BR87
3218997	BR91
3220115	BR163
3222624	BR91

AMERICAN MOTORS	
MFG. NO.	MOOG NO.
3223180	BR168
3223185	BR169
3223186	BR170
3227806	BR163
3227823	BR91
3227829	BR91
3232245	BR171
3232250	BR91
3235246	BR129
4488310	BR141
8123074	BR163

CHECKER	
MFG. NO.	MOOG NO.
705280	BR4
705281	BR5

CHECKER	
MFG. NO.	MOOG NO.
792301	BR4
792302	BR5

CHECKER	
MFG. NO.	MOOG NO.
792393	BR8
792442	BR9

CHRYSLER	
MFG. NO.	MOOG NO.
1635600	BR81
1635984	BR17
1636010	BR16
1636017	BR15
1636041	BR14
1636401	BR14
1734327	BR45
1825317	BR18
1858024	BR48
2071204	BR31
2071206	BR47
2071502	BR118
2071506	BR107
2269124	BR65

CHRYSLER	
MFG. NO.	MOOG NO.
2269189	BR67
2269682	BR96
2535796	BR104
2535886	BR140
2835824	BR104
2835826	BR104
2835834	BR104
2835842	BR125
2835856	BR125
2948625	BR140
291123	BR164
3402552	BR146
3402583	BR140
3402682	BR147

CHRYSLER	
MFG. NO.	MOOG NO.
3402766	BR159
3402783	BR158
3402846	BR140
3402847	BR147
3492128	BR154
3722565	BR146
3722566	BR147
3722568	BR158
3722569	BR159
3815688	BR186
3815702	BR176
4014061	BR176
5204622	BR187

FORD	
MFG. NO.	MOOG NO.
C0DD-3063C	BR40
AJ-3068A	BR30
C0DD-3068A	BR30
C0DZ-3068A	BR30
C0LL-3068A	BR5
C1VV-3068A	BR32
C1VY-3068A	BR32
C5AA-3068A	BR66
C5AA-3068C	BR66

FORD	
MFG. NO.	MOOG NO.
C5AZ-3068C	BR66
C6VY-3068A	BR108
C8AZ-3068A	BR150
C8OA-3068A	BR150
C8OA-3068B	BR150
C8VY-3068A	BR108
D1FZ-3068A	BR138
D1SA-3068A	BR150
D1SZ-3068A	BR150

FORD	
MFG. NO.	MOOG NO.
D2AZ-3068AA	BR138
D3AA-3068AA	BR150
D3AZ-3068A	BR150
D4AW-3068AA	BR150
D4FZ-3068A	BR162
D4FZ-3068AA	BR162
D4ZZ-3068A	BR162
D5DW-3068AA	BR162
D5DZ-3068A	BR166



**DOMESTIC CONTROL ARM AND IDLER ARM RUBBER  
BUSHING CROSS-REFERENCE - O.E. TO MOOG**

**Federal-Mogul Document #2185**

C5AZ-3068A

BR66

D2FZ-3068A

BR138

D5ZW-3068AA

BR162



## DOMESTIC CONTROL ARM AND IDLER ARM RUBBER BUSHING CROSS-REFERENCE - O.E. TO MOOG

Federal-Mogul Document #2185

FORD	
MFG. NO.	MOOG NO.
D5ZW-3068BA	BR162
D5ZZ-3068A	BR162
D6DW-3068AA	BR166
D6EW-3068AA	BR162
D9AC-3068AA	BR196
D9AZ-3068A	BR196
D9AZ-3068AA	BR182
D9AZ-3068A	BR197
LA-3068A	BR5
MG-3068A	BR30
B4A-6069A	BR3
C0AA-3069A	BR3
C0AA-3069B	BR21
C0LL-3069A	BR3
C1AA-3069A	BR21
C1AA-3069B	BR34
C1AZ-3069A	BR21
C1MY-3069A	BR44
C1SS-3069C	BR49
C1VV-3069A	BR34
C1VV-3069B	BR34
C1VY-3069A	BR34
C2OZ-3069A	BR39
C2OZ-3069B	BR39
C3AZ-3069A	BR43
C3AZ-3069D	BR44
C3AZ-3069E	BR3
C3AZ-3069F	BR21
C3AZ-3069G	BR44
C3AZ-3069H	BR43
C3OZ-3069A	BR39
C5AA-3069B	BR64
C5AZ-3069A	BR64
C5AZ-3069B	BR64
C6OA-3069A	BR103
C6OZ-3069A	BR103
D1FZ-3069A	BR139
D3AA-3069AA	BR64
D3AA-3069AB	BR64
D3AZ-3069A	BR64
D3AZ-3069B	BR64
D4FZ-3069A	BR181

FORD	
MFG. NO.	MOOG NO.
D4FZ-3069AB	BR181
D4ZZ-3069A	BR181
D5AW-3069AA	BR64
D5DW-3069AA	BR167
D5DZ-3069A	BR167
D5ZW-3069AA	BR160
D6AZ-3069A	BR64
D7FZ-3069A	BR181
D8BC-3069AA	BR191
D8EC-3069AA	BR181
E0SC-3069AA	BR203
E0VC-3069CA	BR207
E1FZ-3069A	BR224
E43Z-3069A	BR225
E43Z-3069B	BR225
E6DZ-3069A	BR223
LA-3069A	BR3
MK-3069A	BR3
C0LL-3A086A	BR4
C1VV-3A086A	BR33
C1VV-3A086B	BR33
D9AC-3A086AB	BR197
AD-3A087A	BR4
B4A-3087A	BR4
B4A-3087B	BR4
C5TZ-3B177A	BR80
C7TZ-3B177A	BR142
C8TZ-3B177A	BR143
C1MM-3A262B	BR44
D8BC-3A262AA	BR192
E0AC-3A262AA	BR199
E3ZC-3A262AA	BR192
C0DD-3356A	BR26
C1AA-3356A	BR23
C1AZ-3356A	BR23
C2SZ-3356A	BR62
C3AZ-3356A	BR23
C3DA-3356B	BR23
C3DZ-3356A	BR23
C3DZ-3356B	BR99
C3DZ-3356C	BR63
C3DZ-3356D	BR99

FORD	
MFG. NO.	MOOG NO.
C3SZ-3356A	BR62
C3XZ-3356A	BR79
C4AZ-3356A	BR79
C5ZZ-3356A	BR79
D3AA-3356AA	BR79
MA-3356B	BR99
MJ-3356A	BR10
C1AA-3358A	BR24
C1AZ-3358A	BR24
C3AZ-3358A	BR24
C4OZ-3358A	BR119
C5AZ-3358A	BR90
C5OZ-3358A	BR98
C6OZ-3358A	BR98
C7OZ-3358A	BR112
C9AZ-3358A	BR90
C9OZ-3358A	BR112
D3A-3358AB	BR90
D5DZ-3358A	BR90
D5DW-3358AA	BR90
MA-3358A	BR80
C7WA-3B271A	BR120
C5AA-5A638G	BR109
C5AA-5A638H	BR110
402026	BR133
C5AA-5A638J	BR110
C5AA-5A638K	BR109
C7AA-5A638A	BR111
C9AA-5A638A	BR111
C9AA-5A638B	BR111
D0SA-5A638A	BR111
D2OA-5A638AA	BR152
D2OA-5A638CC	BR151
D2OA-5A638HA	BR151
D2SA-5A638AA	BR153
D2SA-5A638AB	BR153
D2SA-5A638CA	BR151
D4AZ-5A638AB	BR111
D4AW-5A638AB	BR111
D4OW-5A638A	BR152
D4SW-5A638A	BR153

GENERAL MOTORS	
MFG. NO.	MOOG NO.
325835	BR129
331283	BR129

GENERAL MOTORS	
MFG. NO.	MOOG NO.
335887	BR157
335897	BR156

GENERAL MOTORS	
MFG. NO.	MOOG NO.
337972	BR149
343541	BR131



**DOMESTIC CONTROL ARM AND IDLER ARM RUBBER  
BUSHING CROSS-REFERENCE - O.E. TO MOOG**

**Federal-Mogul Document #2185**

335866

BR156

335898

BR157

346561

BR178



**DOMESTIC CONTROL ARM AND IDLER ARM RUBBER  
BUSHING CROSS-REFERENCE - O.E. TO MOOG**

Federal-Mogul Document #2185

GENERAL MOTORS		GENERAL MOTORS		GENERAL MOTORS	
MFG. NO.	MOOG NO.	MFG. NO.	MOOG NO.	MFG. NO.	MOOG NO.
335886	BR156	475305	BR177	544247	BR94
335899	BR130	479341	BR132	548807	BR92
351286	BR130	480554	BR132	548845	BR52
360747	BR177	480555	BR132	849705	BR133
360774	BR180	480571	BR87	562599	BR188
360775	BR180	482026	BR133	563692	BR190
366165	BR156	483101	BR132	563693	BR190
366746	BR177	483102	BR132	579805	BR35
369186	BR157	483105	BR132	588438	BR122
369815	BR156	483106	BR133	1196337	BR38
371793	BR156	483107	BR132	1368451	BR87
371794	BR156	483108	BR133	1370101	BR87
378117	BR135	483162	BR132	1371368	BR87
378232	BR129	484373	BR87	1371369	BR87
378233	BR130	484374	BR87	1376952	BR87
382368	BR128	484375	BR87	1376957	BR22
382740	BR69	484439	BR132	1377921	BR87
382741	BR68	484460	BR132	1383925	BR87
384207	BR122	487154	BR132	1468832	BR83
388213	BR76	487660	BR133	1470162	BR84
388265	BR87	489002	BR87	1490255	BR82
388266	BR87	489091	BR87	1475069	BR85
389221	BR144	489092	BR87	1475237	BR27
389666	BR122	489093	BR87	1475701	BR22
390220	BR65	489260	BR87	1482693	BR86
391016	BR100	490504	BR87	1482694	BR86
392826	BR101	490505	BR87	1482695	BR86
398101	BR65	490526	BR87	1482696	BR86
399941	BR87	490531	BR87	1482697	BR86
401267	BR124	491100	BR87	1490868	BR27
402026	BR133	491221	BR87	1494037	BR202
402109	BR144	491637	BR133	1495647	BR127
402116	BR65	491638	BR133	1498626	BR133
402169	BR144	494082	BR87	1498628	BR133
404227	BR68	494129	BR87	1602607	BR130
404228	BR128	494131	BR87	1612394	BR189
404494	BR87	494242	BR132	1612395	BR189
406969	BR100	494417	BR132	1618534	BR189
413578	BR65	494945	BR133	3515343	BR86
413579	BR144	526841	BR133	3515365	BR86
458931	BR156	526842	BR133	3711826	BR1
461851	BR156	529804	BR195	3714368	BR2
164852	BR183	532072	BR92	3714574	BR25
164853	BR184	537878	BR195	3714575	BR26
462980	BR178	538259	BR92	3716811	BR7
470722	BR179	539330	BR56	3758671	BR60
473523	BR195	541468	BR89	3758675	BR61



**DOMESTIC CONTROL ARM AND IDLER ARM RUBBER  
BUSHING CROSS-REFERENCE - O.E. TO MOOG**

**Federal-Mogul Document #2185**

473786

BR182

542468

BR73

3764032

BR61



## DOMESTIC CONTROL ARM AND IDLER ARM RUBBER BUSHING CROSS-REFERENCE - O.E. TO MOOG

Federal-Mogul Document #2185

GENERAL MOTORS	
MFG. NO.	MOOG NO.
3764034	BR61
3764035	BR61
3788516	BR36
3790199	BR70
3790207	BR78
3791518	BR123
3791519	BR123
3793589	BR50
3793593	BR51
3842882	BR149
3856391	BR95
3857679	BR77
3864586	BR60
3869055	BR87
3869449	BR71
3869855	BR87
3869857	BR87
3878372	BR95
3888738	BR95
3900220	BR65
3913461	BR247
3913462	
3913471	BR71
3926296	BR87
3928381	BR101
3953593	BR126
3964043	BR95
3975588	BR128
3977211	BR129
3977212	BR68
3978003	BR135

GENERAL MOTORS	
MFG. NO.	MOOG NO.
3978005	BR134
3978006	BR134
3978033	BR135
3978060	BR136
3978063	BR135
3984541	BR131
3988062	BR135
3988064	BR137
3993676	BR129
3993677	BR130
3993758	BR129
3997973	BR87
5675062	BR88
5697838	BR96
6255602	BR37
6255708	BR72
6255721	BR59
6270320	BR148
3270321	BR149
6271677	BR131
9772108	BR73
9773067	BR93
9773165	BR87
9778357	BR75
9779077	BR74
9780946	BR87
9784761	BR87
9791882	BR113
9792687	BR74
9793175	BR87
9795992	BR87

GENERAL MOTORS	
MFG. NO.	MOOG NO.
9942588	BR87
10000067	BR185
10000069	BR185
10000070	BR185
10000071	BR185
10000072	BR185
10000139	BR133
10018021	BR226
10018450	BR226
10019594	BR226
10022924	BR212
14003183	BR183
14008441	BR156
14008450	BR130
14020223	BR156
14024143	BR219
14026610	BR220
14026628	BR220
14039483	BR183
14039484	BR216
14041647	BR188
14049340	BR217
14063577	BR242
14065721	BR217
14073311	BR218
14076627	BR221
14076628	BR222
15067586	BR250
25526640	BR222
25534006	BR242

INTERNATIONAL	
MFG. NO.	MOOG NO.
236522-R91	BR16
236530-R91	BR5

INTERNATIONAL	
MFG. NO.	MOOG NO.
443869-C1	BR65

INTERNATIONAL	
MFG. NO.	MOOG NO.
627555-R91	BR8

VOLVO	
MFG. NO.	MOOG NO.
671444-8	BR212